

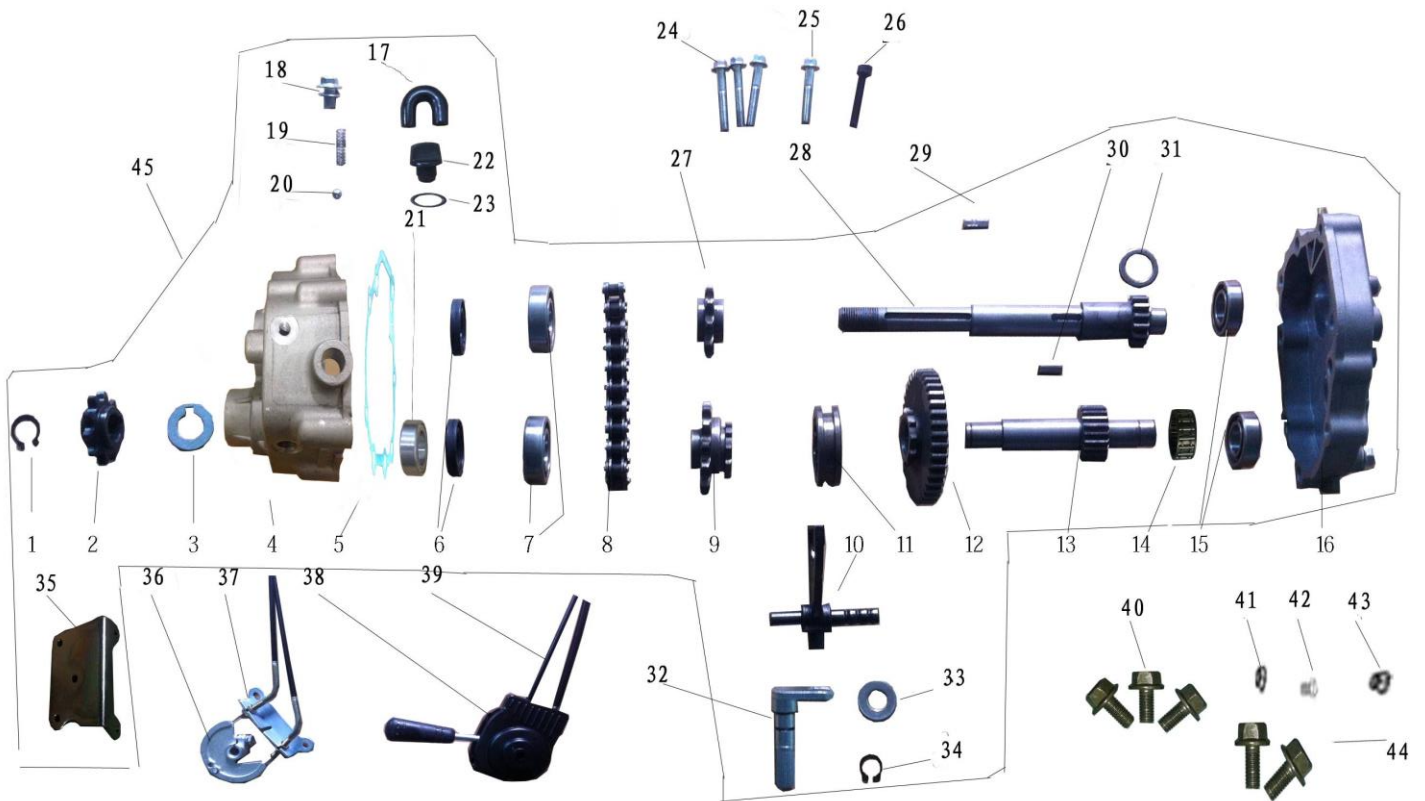


MID XRX/R

Reverse System parts Manual

FIG.24 REVERSE SYSTEM PARTS

FIG.24



NO.	CODE	DESCRIPTION	QTY.
1	89411600000003	Snap ring ϕ 16	1
2	5400600080L000	10T driven sprocket	1
3	8020235080G000	Rear Clutch washer	1
4	1000001280G000	Reverse gear box left	1
5	1000001180G000	Left gasket	1
6	YF025035075000	Oil seal 20X35X7.5	2
7	6004Z000000000	Bearing 6004Z	2
8	420010Z080G000	Drive chain, 10T, 420	1
9	1000001480G000	Drive sprocket, 13T	1
10	1000001680G000	Shift fork	1
11	1000001780G000	Slide bushing	1
12	1000001980G000	Driven shaft	1
13	1000001880G000	Driven gear	1
14	K18221600000000	Needle bearing 18*22*16	1
15	6003000000000000	Bearing 6003	2
16	1000001380G000	Reverse gear box right	1
17	1000002880G000	Vent cap	1
18	57870801212502	BOLT M8*12 w/ washer	2
19	1000002080G000	Fork spring	1
20	1000002180G000	Steel ball ϕ 6	1

21	61804000000000	Bearing 61804	1
22	1000002980G000	Seal cap	1
23	1000003080G000	Seal ring	1
24	57870604012502	Bolt M6*40	3
25	57870604012502	Bolt M6*35	1
26	GB700603512503	Screw M6*35	1
27	1000001580G000	Drive sprocket,10T	1
28	1000002280G000	Driving shaft	1
29	1000002380G000	Key 5X5X16	1
30	1000002480G000	Key 5X5X14	1
31	1000002580G000	Spacer ø18* ø25*2	1
32	1000002680G000	Gear shaft	1
33	97000800000002	Washer ø 12	1
34	89411200000003	Snap ring ø12	1
35	1000002780G000	Bracket	1
36	4000200300G200	Turning wheel	1
37	4000100300G200	Turning Wheel bracket	1
38	4070000300G000	Reverse gear shifter assy.	1
39	6013000080G000	Reverse gear wire	2
40	57890601210005	Bolt M6*12	3
41	61770600010005	GB6177 NUT M6	2
42	57870802012505	Hexagon flange bolts M8*20	1
43	61870800012505	Self-locking nut M8	1
44	57890601610005	Bolt M6*16	2
45	1000001080G000	Reverse gearbox assy. (w/ bracket & Sprocket)	1